



Agriculture

Agriculture and produce for the people and the environment

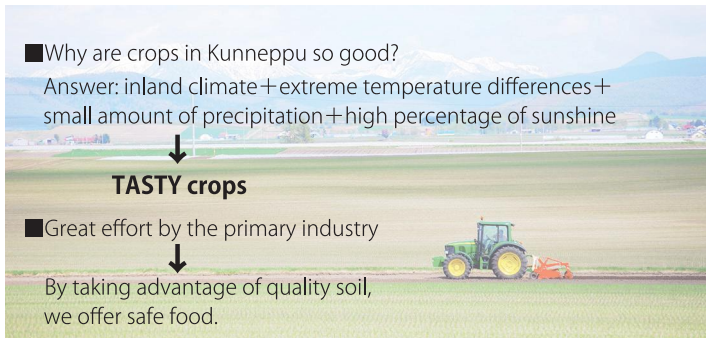
■ Why are crops in Kunneppu so good?

Answer: inland climate + extreme temperature differences + small amount of precipitation + high percentage of sunshine

↓
TASTY crops

■ Great effort by the primary industry

↓
By taking advantage of quality soil, we offer safe food.



Rice, onions, and potatoes used for the school lunch are all harvested in Kunneppu.

Very Popular Kunneppu Melon



Here is the trick to growing our melons

Patience + Love + Temperature difference

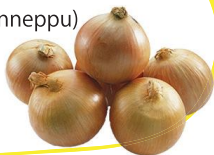
↓
Sweet and mellow flavor



Amount of onions produced is **No.1 in Japan**

(Kitami district including Kunneppu)

Around 150 farmers grow onions with all their heart



Amount of raw milk produced is over **30,000 tons**

There are eight free stall barns out of 39 milk farms in Kunneppu. Because of recent increases in size and to save labor, five farms have installed mechanical milking. There have been prosperous improvement in dairy cattle and they are shown at the All Hokkaido Fair.

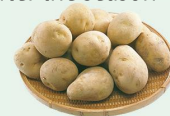


Agriculture in Kunneppu Big news in 2019

New potato chips were released!

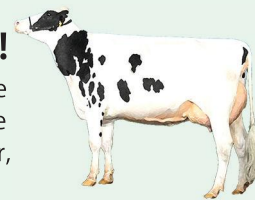


Potato chips made from potatoes called "Snow March" which were harvested in Kitami district were released nationwide. "Snow March" was named after the season which snow is starting to fall until the 3rd month of the year during which sweetness increases.



A brilliant first achievement for Kunneppu!

A dairy cow from Kunneppu won the Reserve Intermediate Champion at the 17th Hokkaido General Livestock Fair, milk cow division (Holstein).



"Eli Valiant Angel Chang" won the Reserve Intermediate Champion.



Check out the chart below and try some vegetables when in season. These vegetables are perfect for gifts as well.

Harvest Time	June	July	August	September	October	November
onions			[Blue bar]			
potatoes			[Blue bar]			
autumn wheat		[Blue bar]	from late July (for about a week)			
spring wheat			[Blue bar]	from early August (for about a week)		
beet root					[Blue bar]	
sweet corn ※1				[Blue bar]		
paddy rice					[Blue bar]	
melon		[Blue bar]				

※1 Part of the crops are used for Ajinomoto Food Hokkaido Inc.